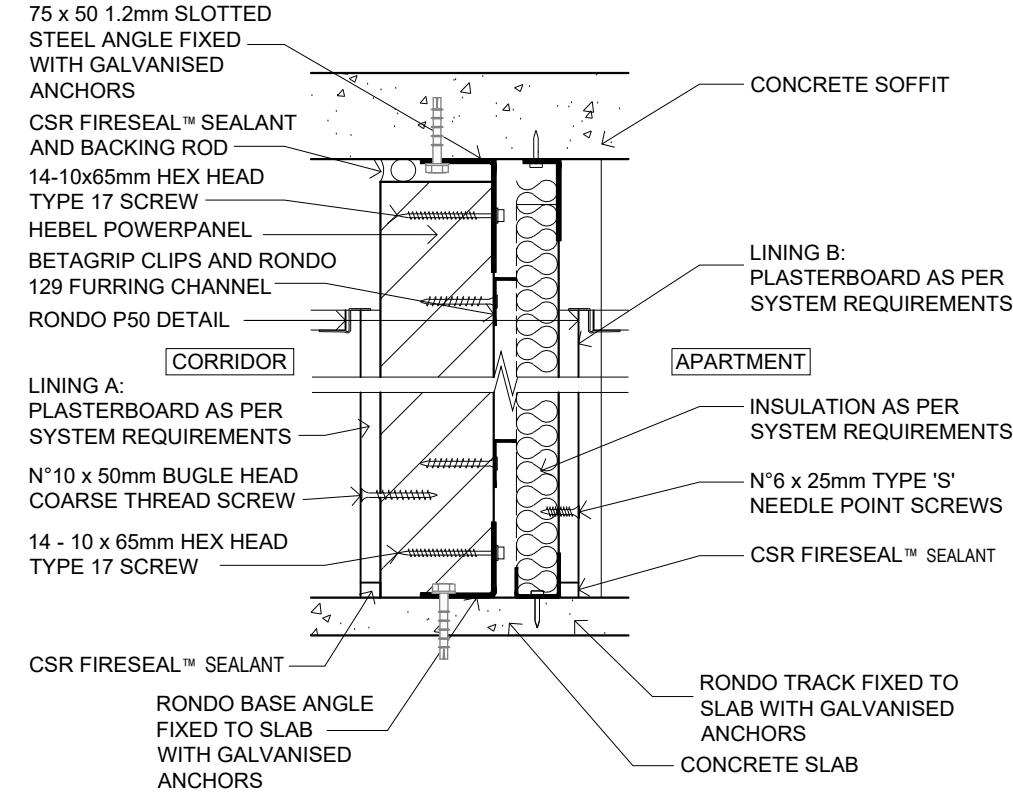
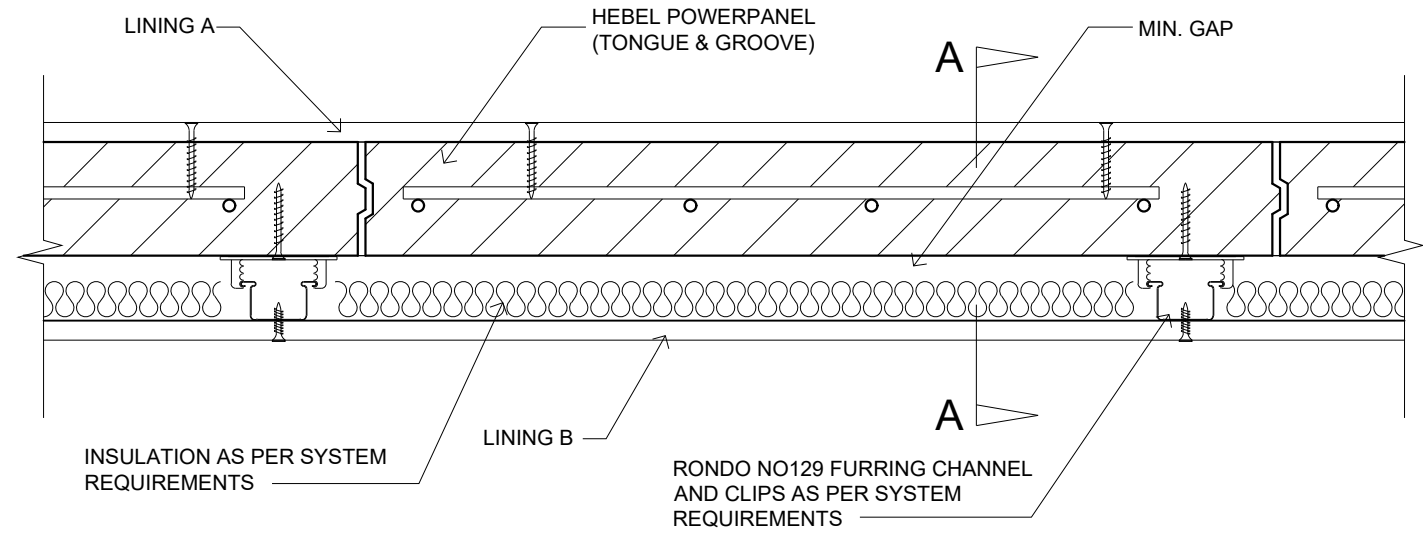


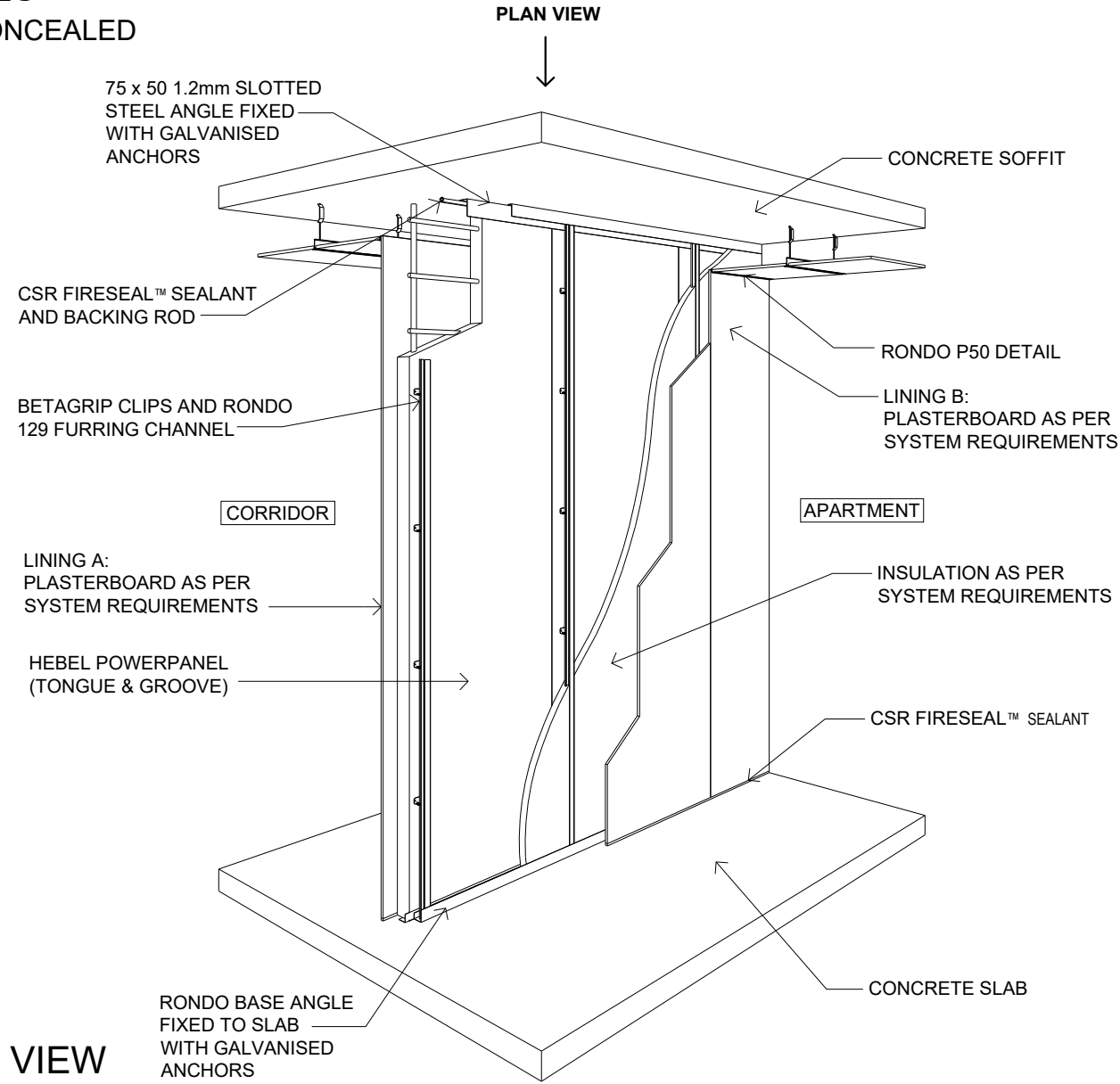
HEBEL CORRIDOR WALLS
FOR MAXIMUM FLOOR SPACE WITH CONCEALED
SERVICES ON ONE SIDE
CSR21150 - CSR21151



VERTICAL CROSS SECTION DETAIL A-A



DETAIL PLAN VIEW



ISOMETRIC VIEW
NTS

CORRIDOR WALL									
CODE	APPLICATION	WALL THICKNESS	WALL HEIGHT 'H'	FRL (B)	R _w	SYSTEM COMPONENT VARIATIONS			
						LINING A	MIN. GAP	INSULATION (A)	LINING B
CSR21150	DRY TO DRY	144mm	UP TO 3.3m HIGH	-/90/90 FOR WALL HEIGHTS UP TO 3.3m	52	13mm GYPROCK CD	43mm	50mm BRADFORD ACOUSTIGARD 11	13mm GYPROCK CD
CSR21151	DRY TO WET	144mm	UP TO 3.3m HIGH	-/90/90 FOR WALL HEIGHTS UP TO 3.3m	53	HEBEL SIDE - 13mm GYPROCK CD	43mm	50mm BRADFORD ACOUSTIGARD 11	STUD SIDE - 13mm AQUACHEK

REFER TO DESIGN AND INSTALLATION GUIDES FOR HIGH RISE INTERTENANCY AND SERVICE WALLS (HEB 1354) FOR MORE CONSTRUCTION AND PRODUCT INFORMATION. 13mm AQUACHEK CAN BE REPLACED BY 9mm FIBRE CEMENT SHEETING AND ACHIEVE THE SAME FRL AND ACOUSTICS.
FOR WALLS > 3.3m AND ≤ 4.65m, CAGED TONGUE & GROOVE POWERPANEL CAN BE USED AND WILL ACHIEVE A FRL OF -/120/120.
REFER TO DESIGN AND INSTALLATION GUIDES FOR SHAFT AND SCISSOR STAIR WALLS (HELIT 032) FOR MORE DETAILED INFORMATION.



CSR BUILDING PRODUCTS LTD
Head Office: Trinitri 3, 39 DELHI RD, NORTH RYDE NSW 2113
LOCKED BAG 1345, NORTH RYDE BC NSW 1670
A.B.N. 55 008 631 356 Ph: 1300 369 448
www.hebelaustralia.com.au



SYSTEM CODE		TITLE			
CSR21150 - 21151		HEBEL CORRIDOR WALLS			
DESIGN GUIDE REFERENCE	SCALE	SHEET SIZE	DRAWN	DATE	
	1:5 @ A3	A3	ET	12.04.24	
		SHEET NO	CHECK	REVISION	
		1 of 1	CW	E	